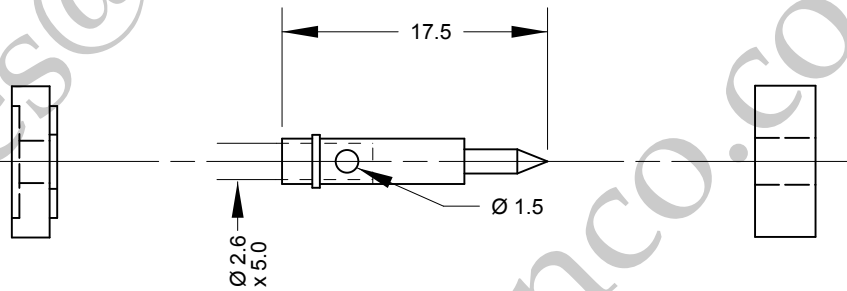
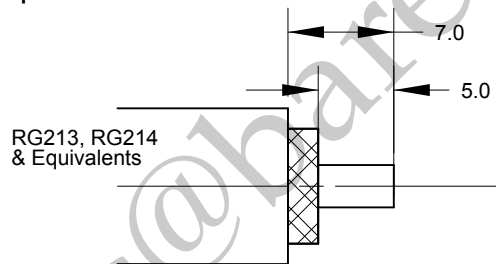


Cable : RG213, RG214 & Equivalents

Pin and insulator arrangement



Cable Preparation



Cable Construction Specifications

	RG213	RG214
Inner Conductor	2.29mm	2.29mm
Dielectric	7.25mm	7.25mm
Outer Conductor	8.00mm	8.00mm
Overall Braid	8.00mm	8.60mm
Jacket	10.30mm	10.80mm

	PART	DESCRIPTION
1	Shell/Body	Brass, CuSnZn3 Plated
2	Insulator	Teflon
3	Pin Contact	Brass, Gold Plated
4	Nut	Brass, CuSnZn3 Plated
5	Neoprene	White

BARENCO Ltd

Barenco Ltd

Unit 14 Winterbeck Ind. Est. Orston Lane, Bottesford, Nottinghamshire NG13 0AU. Tel. 0(44)1949 860400 Email.Sales@barenco.co.uk. Web.www.barenco.co.uk

DRAWN Name	BPG
Dimensions: mm	
Date	5/02/2020
Last Rev.	29/08/2020
SCALE	1 : 0.5

N plug clamp for RG213 & RG214	
SIZE	DWG NUMBER
A4	165000
REV -	SHEET 1 OF 1