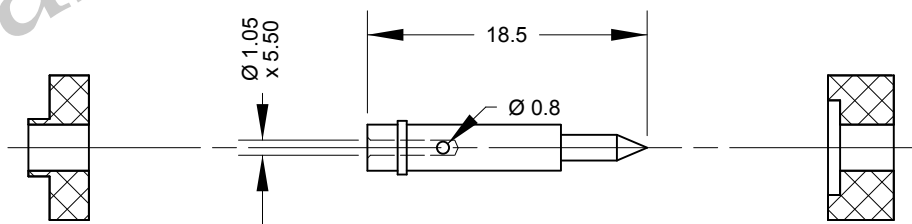
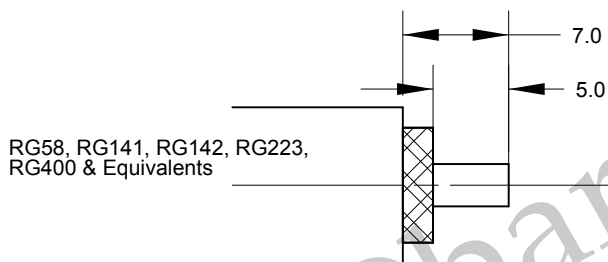


Cable : RG58, RG141, RG142, RG223, RG400 & Equivalents

Pin and insulator arrangement



Cable Preparation



Cable Construction Specifications

	RG58	RG141	RG142	RG223	RG400
Inner Cond.	0.90mm	0.94mm	0.95mm	0.89mm	0.97mm
Dielectric	2.95mm	2.95mm	2.95mm	2.95mm	2.95mm
Overall Braid	3.30mm	3.30mm	3.96mm	4.00mm	3.96mm
Jacket	4.95 mm	4.80mm	5.00mm	5.40mm	4.95mm

	PART	DESCRIPTION
1	Shell/Body	Brass, CuSnZn3 Plated
2	Insulator	PTFE / Teflon
3	Pin Contact	Brass, Gold Plated
4	Nut	Brass, CuSnZn3 Plated
5	Neoprene	White

BARENCO Ltd

Barenco Ltd

Unit 14 Winterbeck Ind. Est. Orston Lane, Bottesford, Nottinghamshire NG13 0AU. Tel. 0(44)1949 860400
 Email.Sales@barenco.co.uk. Web.www.barenco.co.uk

DRAWN Name	BPG	N plug clamp for RG58, RG141, RG142, RG223 & RG400	
Dimensions: mm		SIZE	DWG NUMBER
Date	23/02/2020	A4	165010
Last Rev.		REV	-
SCALE 1 : 0.5			SHEET 1 OF 1