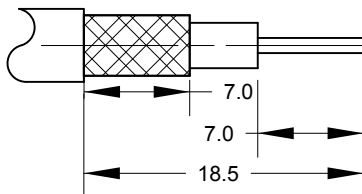


Cable : RG174, RG188, RG316 & Equivalents

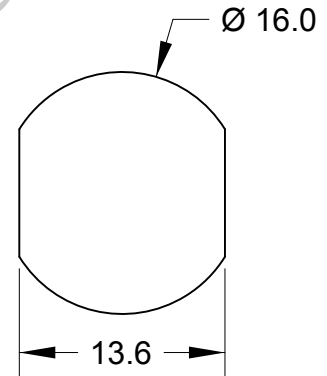
Note.
Inner conductor soldered and ferrule crimped before assembly fitted to body.

Cable Preparation

RG174, RG188
RG316 & Equivalents



Recommended Panel Piercings Dimensions



Cable Construction Specifications

	RG174	RG188	RG316
Inner Conductor	0.48mm	0.51mm	0.53mm
Dielectric	1.52mm	1.52mm	1.53mm
Overall Braid	1.98mm	2.06mm	1.98mm
Jacket	2.54mm	2.79mm	2.50mm

	PART	DESCRIPTION
1	Shell/Body	Brass, CuSnZn3 Plated
2	Insulator	Teflon
3	Pin Contact	Brass, Gold Plated
4	Nut	Brass, CuSnZn3 Plated
5	Gasket	Silicone Rubber

BARENCO Ltd

Barenco Ltd

Unit 14 Winterbeck Ind. Est. Orston Lane, Bottesford,
Nottinghamshire NG13 0AU. Tel. 0(44)1949 860400
Email.Sales@barencoco.uk. Web.www.barencoco.uk

DRAWN Name	BPG	N bulkhead socket for RG174, RG188 & RG316	
Dimensions: mm		SIZE	DWG NUMBER
Date	12/04/2021	A4	165034
Last Rev.		REV -	SHEET 1 OF 1
SCALE 1 : 0.5			