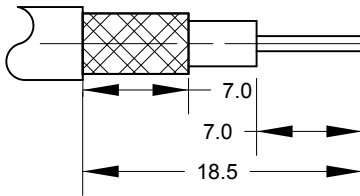


Cable : RG142, RG223, RG400 & Equivalents

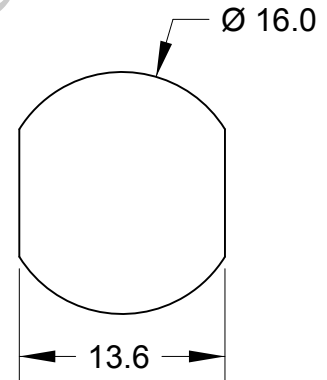
Note.  
Inner conductor soldered and ferrule crimped before assembly fitted to body.

Cable Preparation

RG142, RG1223, RG400 & Equivalents



Recommended Panel Piercings Dimensions



Cable Construction Specifications

	RG142	RG223	RG400
Inner Conductor	0.95mm	0.89mm	0.97mm
Dielectric	2.95mm	2.95mm	2.95mm
Overall Braid	3.96mm	4.00mm	3.96mm
Jacket	5.00mm	5.40mm	4.95mm

	PART	DESCRIPTION
1	Shell/Body	Brass, CuSnZn3 Plated
2	Insulator	Teflon
3	Pin Contact	Brass, Gold Plated
4	Nut	Brass, CuSnZn3 Plated
5	Gasket	Silicone Rubber

**BARENCO Ltd**

**Barenco Ltd**

Unit 14 Winterbeck Ind. Est. Orston Lane, Bottesford, Nottinghamshire NG13 0AU. Tel. 0(44)1949 860400 Email.Sales@barencoco.uk. Web.www.barencoco.uk

DRAWN Name	BPG	N bulkhead socket for RG142, RG223, & RG400	
Dimensions: mm		SIZE	DWG NUMBER
Date	9/01/2021	A4	165038B
Last Rev.		REV	-
SCALE 1 : 0.5			SHEET 1 OF 1