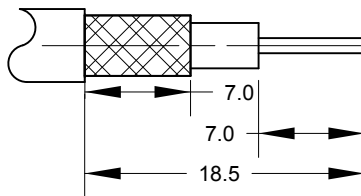


Cable : RG174, RG188, RG316 & Equivalents

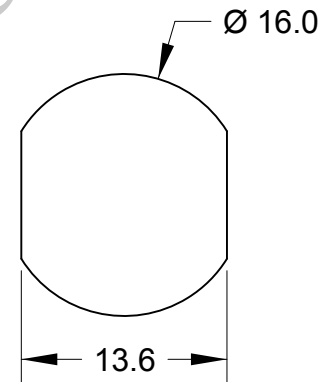
Note.  
Inner conductor soldered and ferrule crimped before assembly fitted to body.

### Cable Preparation

RG174, RG188,  
RG316  
& Equivalents



### Recommended Panel Piercings Dimensions



### Cable Construction Specifications

	RG174	RG188	RG316
Inner Conductor	0.48mm	0.51mm	0.53mm
Dielectric	1.52mm	1.52mm	1.53mm
Overall Braid	1.98mm	2.06mm	1.98mm
Jacket	2.54mm	2.79mm	2.50mm

	PART	DESCRIPTION
1	Shell/Body	Brass, CuSnZn3 Plated
2	Insulator	Teflon
3	Pin Contact	Brass, Gold Plated
4	Nut	Brass, CuSnZn3 Plated
5	Gasket	Silicone Rubber

## BARENCO Ltd

### Barenco Ltd

Unit 14 Winterbeck Ind. Est. Orston Lane, Bottesford,  
Nottinghamshire NG13 0AU. Tel. 0(44)1949 860400  
Email.Sales@barenco.co.uk. Web.www.barenco.co.uk

DRAWN Name	BPG	N bulkhead socket for RG174, RG188 & RG316	
Dimensions: mm		SIZE	DWG NUMBER
Date	9/01/2021	A4	165038S
Last Rev.		REV -	SHEET 1 OF 1
SCALE 1 : 0.5			