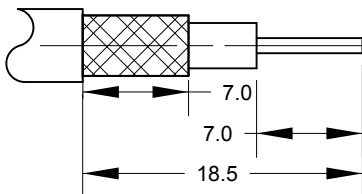


Cable : RG178, RG196 & Equivalents

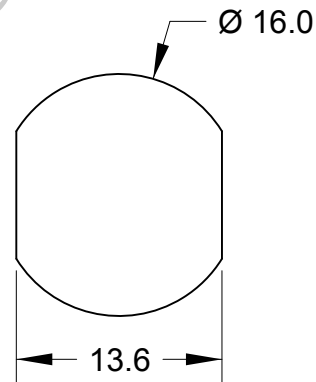
Note.
Inner conductor soldered and ferrule crimped before assembly fitted to body.

Cable Preparation

RG178, RG196, & Equivalents



Recommended Panel Piercings Dimensions



Cable Construction Specifications

	RG178	RG196
Inner Conductor	0.30mm	0.28mm
Dielectric	0.86mm	0.89mm
Overall Braid	1.30mm	1.37mm
Jacket	1.80mm	1.94mm

PART	DESCRIPTION
1	Shell/Body Brass, CuSnZn3 Plated
2	Insulator Teflon
3	Pin Contact Brass, Gold Plated
4	Nut Brass, CuSnZn3 Plated
5	Gasket Silicone Rubber

BARENCO Ltd

Barenco Ltd

Unit 14 Winterbeck Ind. Est. Orston Lane, Bottesford, Nottinghamshire NG13 0AU. Tel. 0(44)1949 860400
Email.Sales@barencoco.uk. Web.www.barencoco.uk

DRAWN Name	BPG	N bulkhead socket for RG178 & RG196	
Dimensions: mm		SIZE	DWG NUMBER
Date	9/01/2021	A4	165038T
Last Rev.		REV	SHEET 1 OF 1
SCALE 1 : 0.5			