

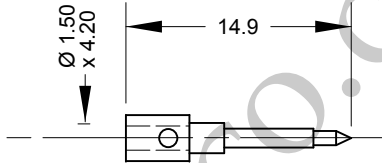
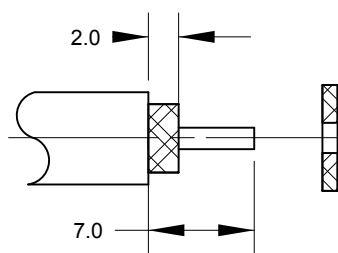
Cable : Aircell 7, ANT300, LMR300 & Equivalentents

Cable preparation details

Pin & Insulator arrangement

Aircell 7, ANT300, LMR300 & Equivalentents

Note. All jacket types



Note.

Solder or Hex crimp 2.54mm

Solder centre contact

or

Centre conductor crimp Hex: 0.1" (2.54mm)

Crimp Tool Order Code:-

180454, 180456 & 180457

Cable Construction Specifications

	LMR300	Aircell 7	ANT300
Inner Conductor	1.78mm	1.85mm	1.78mm
Dielectric	4.83mm	N/A	4.83mm
Overall Braid	5.72mm	N/A	5.72mm
Jacket	7.62mm	7.30mm	7.60mm

	PART	DESCRIPTION
1	Shell/Body	Brass, CuSnZn3 Plated
2	Insulator	PTFE / Teflon
3	Pin Contact	Brass, Gold Plated
4	Nut	Brass, CuSnZn3 Plated
5	Neoprene	White

BARENCO Ltd

Barenco Ltd

Unit 14 Winterbeck Ind. Est. Orston Lane, Bottesford, Nottinghamshire NG13 0AU. Tel. 0(44)1949 860400 Email.Sales@barenco.co.uk. Web.www.barenco.co.uk

DRAWN Name BPG

Dimensions: mm

Date 28/05/2021

Last Rev.

SCALE 1 : 0.5

SMA plug clamp for Aircell 7, ANT300 & LMR300

SIZE

A4

DWG NUMBER

168320

REV -

SHEET 1 OF 1