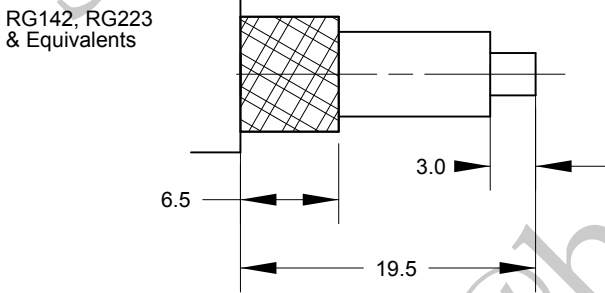


Cable : RG142, RG223 & Equivalents

Cable Preparation



Note.
 Supplied with heat shrink for crimp ferrule
 Crimping Details :-
 Crimp Ferrule Hex 0.213" (5.41mm)
 Crimp Tool Order Code:-
 180455, 180456 or 180458

Cable Construction Specifications

	RG223	RG142
Inner Conductor	0.89mm	0.95mm
Dielectric	2.95mm	2.95mm
Overall Braid	4.00mm	3.96mm
Jacket	5.40mm	5.00mm

	PART	DESCRIPTION
1	Shell/Body	Brass, Nickel Plated
2	Insulator	Teflon
3	Pin Contact	Brass, Gold Plated
4	Ferrule	Brass, Nickel Plated

BARENCO Ltd

Barenco Ltd

Unit 14 Winterbeck Ind. Est. Orston Lane, Bottesford,
 Nottinghamshire NG13 0AU. Tel. 0(44)1949 860400
 Email.Sales@barenco.co.uk. Web.www.barenco.co.uk

DRAWN Name B. Gell

Dimensions: mm

Date 10/07/2020

Last Rev.

SCALE 1 : 0.5

N elbow plug crimp
 for RG142 & RG223

SIZE
A4

DWG NUMBER
170013B

REV -

SHEET 1 OF 1